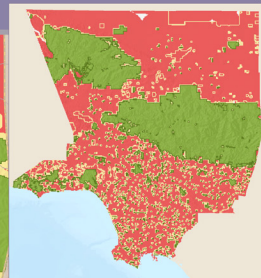
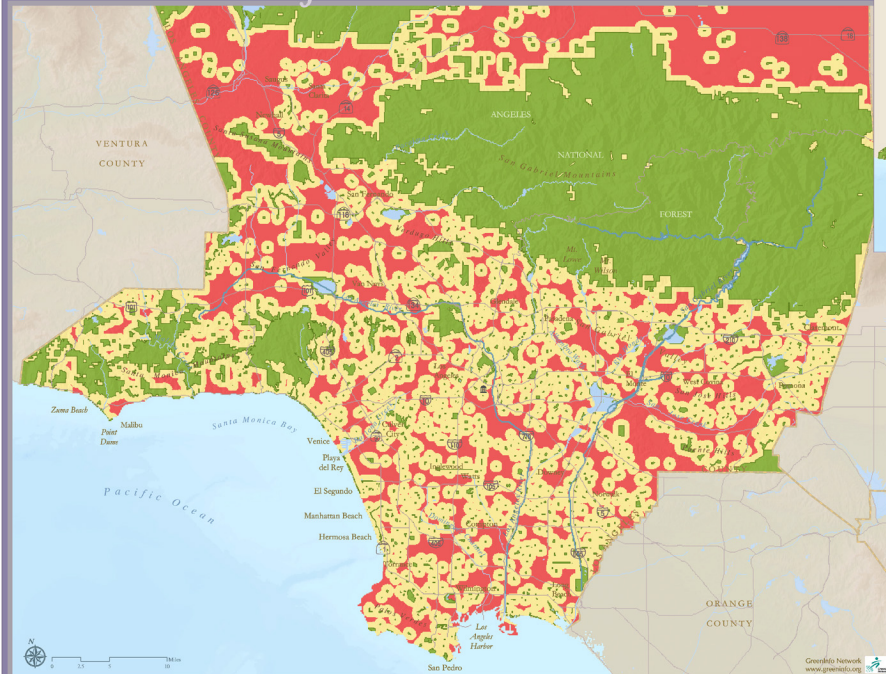


Park Access in Los Angeles



- Existing Park/Green Space
- Within a half mile of a Park
- Over a half mile from a Park

Green Access Mapping is a project of The City Project at the Center for Law in the Public Interest, www.clipi.org. © 2006, using census 2000 data and GIS mapping tools. J. Eric Lovell and Prof. Leo Estrada of UCLA prepared the park space data set.